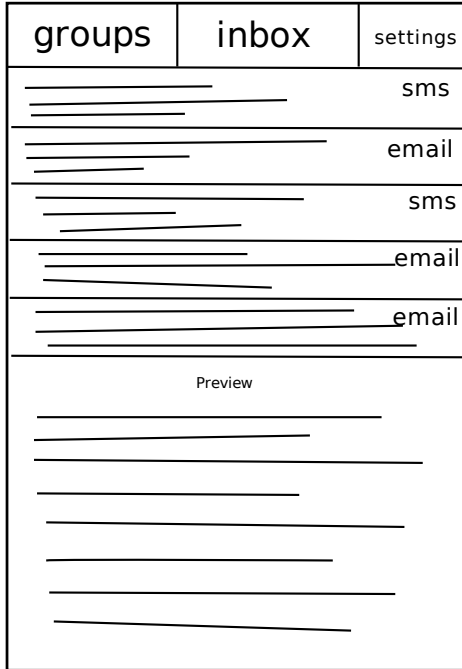
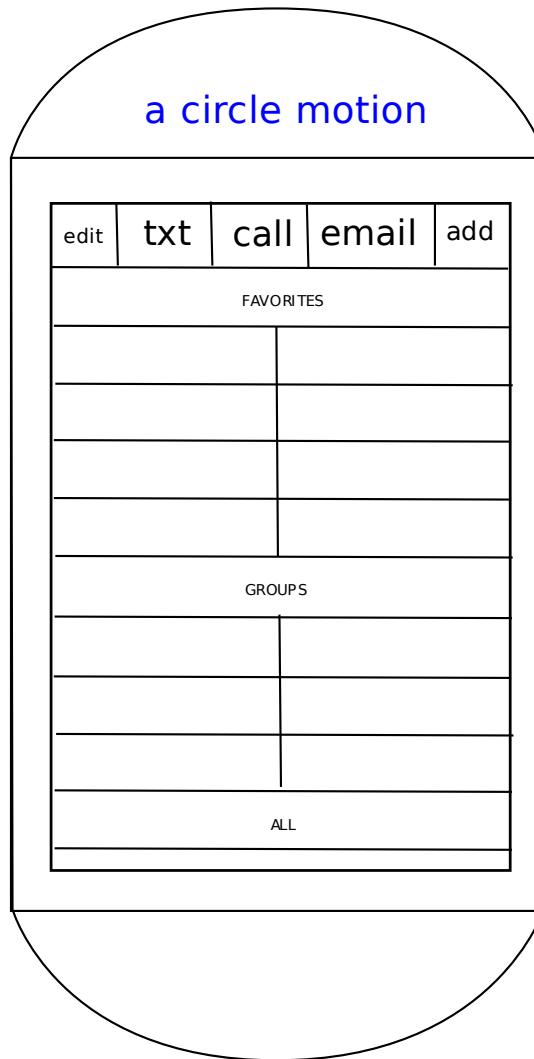


# Using the accelerometers as a way to navigate the areas of the portable device.

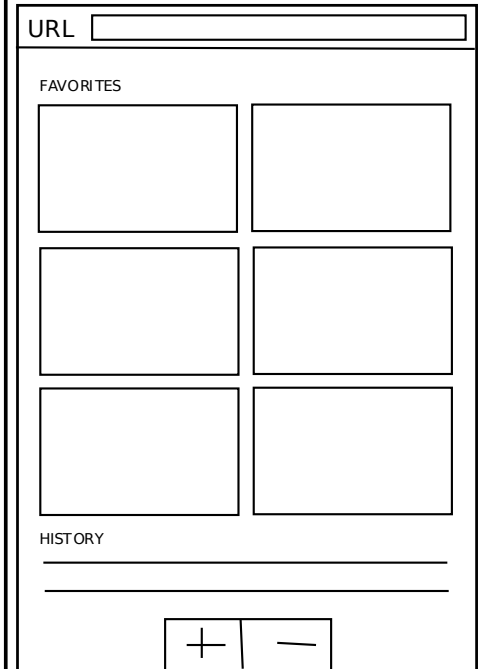
a quick move to the left



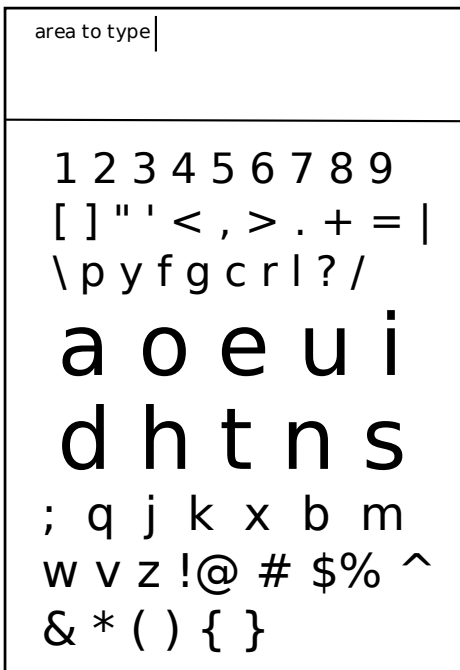
a circle motion



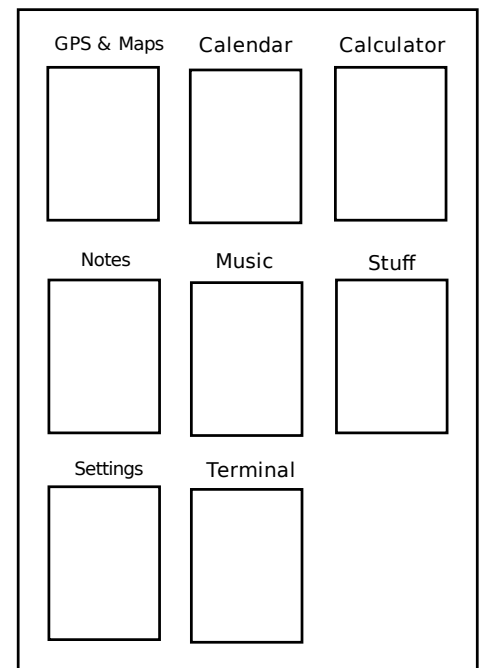
a quick move to the right



a quick towards you to switch to the keyboard



a quick move directly up will give you a list of your different screens



keyboard is layed out so that the most frequently used letters are larger and in the center so they are easier to press

and a quick move away from you to switch back to where you were